



CELL SURGICAL NETWORK®

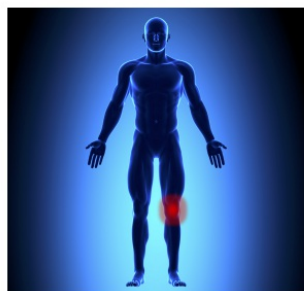
Orthopedics

Background

The Cell Surgical Network investigates the use of autologous adipose derived stromal vascular fraction (SVF, which contains pre-adipocytes, peri-vascular, and hematopoietic stem cells). This work is conducted under IRB approved protocols throughout our affiliate centers around the world. Patient data is collected and follow ups conducted every 3 months to determine efficacy of the cell surgical procedure. This data was collected by CSN affiliates between 2013 and 2017.

English

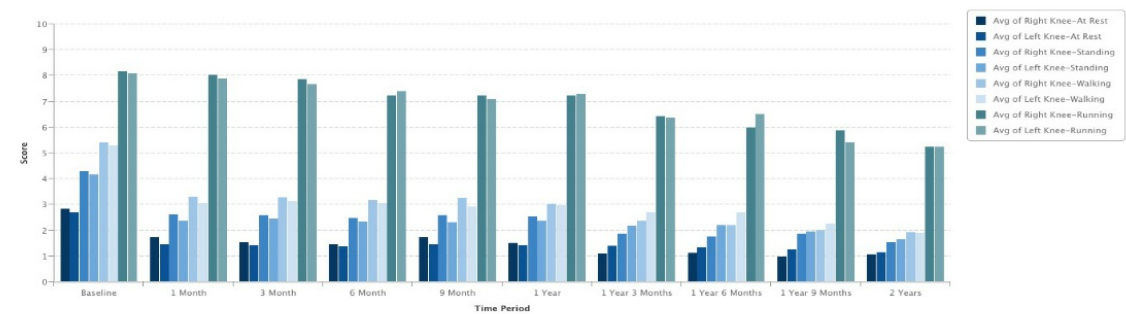
Knees



Knee Success Rate



Knee Pain-CSN Overall



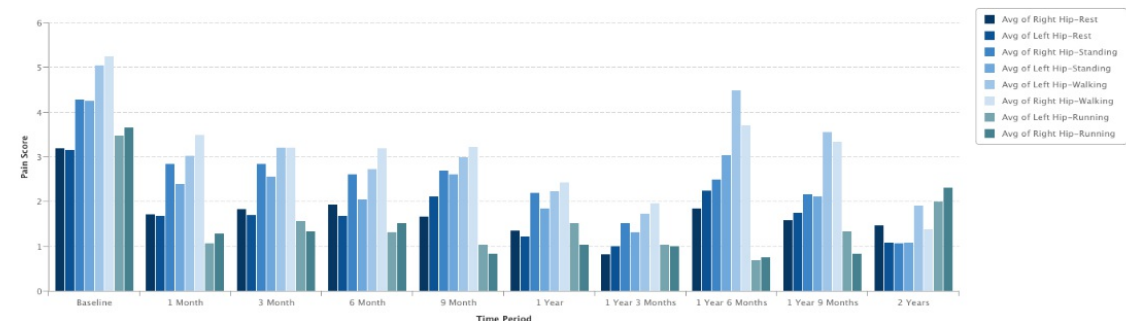
Hips



Hip Success



Hip Pain-CSN Overall

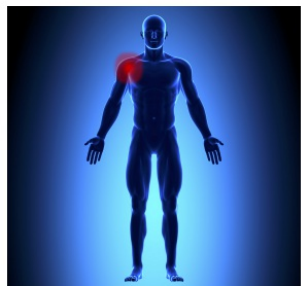


campaigns@cellsurgicalnetwork.com

www.stemcellrevolution.com

Telephone: 760-424-8554

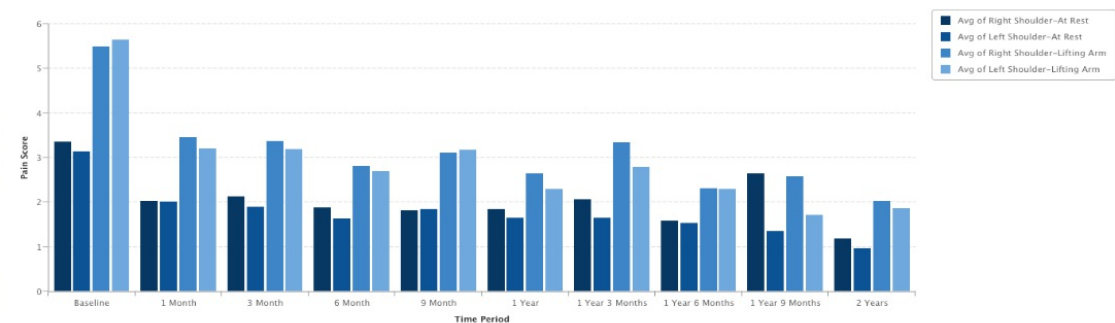
Shoulders



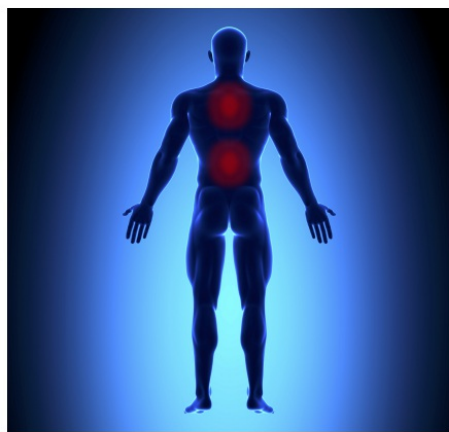
Shoulder Success



Shoulder Pain-CSN Overall



Back



Cervical Success



Thoracic Success



Lumbar Success



Sacral Success



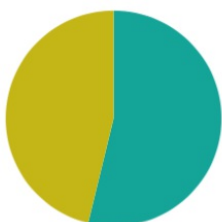
CSN Registry and Data Collection

The Cell Surgical Network collects all of its patients' data in a HIPPA compliant online database. This allows us to study the safety and efficacy of every procedure. The database follows up with patients the first month after their cell surgery and every 3 months after for up to 5 years.



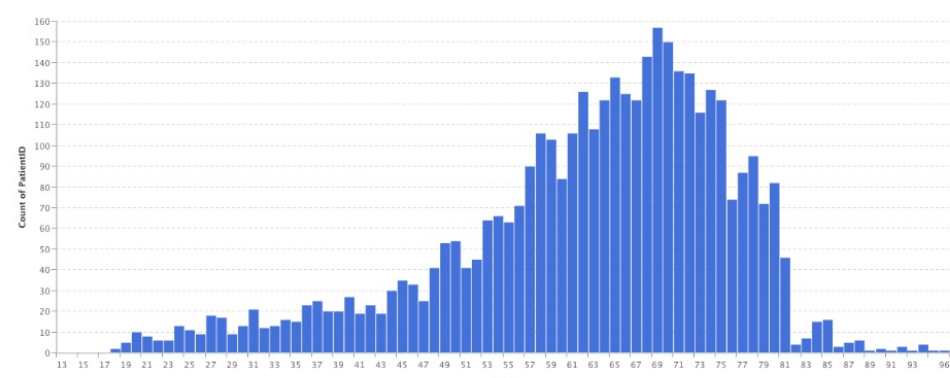
Building Legs

Patient Population Brief Overview



Male (53.80%) Female (46.20%)

CSN Average Age



campaigns@cellsurgicalnetwork.com



CELL SURGICAL NETWORK®

www.stemcellrevolution.com

Telephone: 760-424-8554